



# PRO-LINE™ CABINETRY



**Group B-401**  
Consists of: (L to R)  
(1) B-24-2D and  
(1) B-24



**GREEN-LINE CONSTRUCTION IS AVAILABLE FOR CONTRACT SALES**

A variety of other base and wall cabinets are available. Call for information.

## Common Features

### PRO-LINE™ PROFESSIONAL CABINETS:

- An economy line of modular all-laminate, dowel and glue cabinetry.
- Neutral color all-laminate interiors.
- All cupboards (except sink) have (1) adjustable laminate shelf.
- 4" Satin finish wire pulls.
- Self-closing laminate drawer slides with nylon rollers and positive stops.
- Doors have concealed, self-closing 110° 3-Way adjustable Euro-Hinges.

### COLORS:

- Cabinet** – 927 Folkstone Gray or 346 Natural Oak laminate on exposed surfaces including sides.
- Countertop** – Folkstone Gray square-edged top or choice of (5) other high pressure laminates.

(SEE COLOR CHART THIS PAGE)

## BASE CABINETS – 36" H x 18" D (24" D available on special order). Prices include countertop.



**B-18 (L or R)**  
(S sink is optional)  
18"W x 36"H x 18"D



**B-24**  
24"W x 36"H x 18"D



**BS-24**  
(includes S sink)  
24"W x 36"H x 18"D



**B-18-1D (L or R)**  
18"W x 36"H x 18"D



**B-24-1D**  
24"W x 36"H x 18"D



**B-18-2D (L or R)**  
18"W x 36"H x 18"D



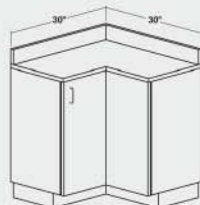
**B-24-2D**  
24"W x 36"H x 18"D



**B-18-5D**  
18"W x 36"H x 18"D



**B-24-5D**  
24"W x 36"H x 18"D

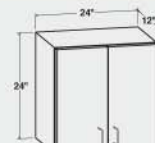


**BCC-30**  
(S sink is optional)  
30x30"W x 36"H x 18"D

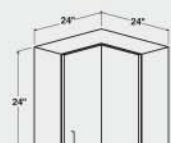
## WALL CABINETS – 24" H (30" H available)



**W-18-24 (L or R)**  
18"W x 24"H x 12"D



**W-24-24**  
24"W x 24"H x 12"D



**WCC-24-24**  
24x24"W x 24"H x 12"D

## TYPICAL CABINET GROUPINGS (available as shown or opposite hand)



**GROUP B-402**  
(S sink is optional)



**GROUP B-403**  
(S sink is optional)



**GROUP B-404**  
(S sink is optional)

## LAMINATE COUNTERTOP COLOR CHOICES



927 FOLKSTONE GRAY 966 BURGUNDY 076 MAUVE BLUSH



318 SHADOW BLUE 956 TEAL 920 ALMOND  
927 Folkstone Gray is standard unless otherwise specified.

## OPTIONS

### FACTORY INSTALLED

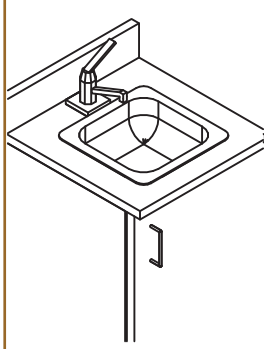
- \*S – Sink & Faucet 15" x 15" (12" x 10" x 5" I.D.)
- \*Lock – Single Drawer or Door Lock
- \*Lock Bolt – Lock & Bolt for double Doors

IF SINGLE DOOR CABINET, YOU MUST SPECIFY DOOR HINGE "R" (RIGHT SHOWN) OR "L" (LEFT).  
ALL COUNTERTOPS HAVE 1/2" OVERHANG EACH END. SEND SKETCH AND DIMENSIONS WITH ORDER.

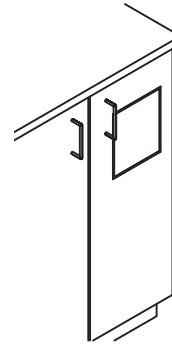
# PRO-LINE™ CABINETRY

Price includes enough countertop to cover each base cabinet. Order GTP-TOP below for extended countertops. Must specify hinging on (1) door cabinets: R = Right Hinged / L = Left Hinged. Cabinet selection and countertop size can be varied to suit your needs. Groups are available as shown or opposite hand. All groups available with optional S sink. (Please specify on order.)

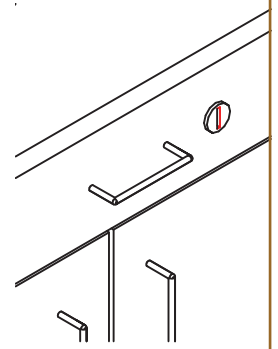
## ACCESSORIES



**S**  
Sink/Faucet/Strainer



**PL-TD**  
Towel Drop



**LOCK**  
Lock for Single Door or Drawer

### COUNTERTOP

**GTP-TOP**  
Cut to size

### DESK DRAWER

**D-18**  
18"W x 6"H x 18 1/2"D  
**D-24**  
24"W x 6"H x 18 1/2"D

### END PANEL

**D-EP**  
3/4"W x 29"H x  
18 1/2"D

### BASE CAB FILLER

**B-F**  
Cut to size (sent loose)

### WALL FILLER

**WF-24**  
**WF-30**  
Cut to size (sent loose)

## TYPICAL GROUPINGS

**GROUP B-405**  
(S sink is optional)  
Ship Wt: 265 lbs.

**GROUP B-406**  
(S sink is optional)  
Ship Wt: 295 lbs.

**GROUP B-407**  
(S sink is optional)  
Ship Wt: 290 lbs.

**GROUP B-408**  
(S sink is optional)  
Ship Wt: 255 lbs.

## TYPICAL GROUPINGS

**GROUP B-409**  
(S sink is optional)  
Ship Wt: 300 lbs.

**GROUP B-410**  
(S sink is optional)  
Ship Wt: 380 lbs.

**GROUP B-411**  
(S sink is optional)  
Ship Wt: 360 lbs.

**GROUP B-412**  
(S sink is optional)  
Ship Wt: 380 lbs.