

LAMINATE AND TABLE VINYL COLOR SELECTOR

KEEP THIS PAGE OPEN WHILE BROWSING THROUGH OUR CATALOG, TO ASSIST WITH YOUR COLOR SELECTION PROCESS.

Laminate Color Selection



346 Natural Oak



5904 Wild Cherry



927 Folkstone Gray



7909 Fusion Maple

THE LAMINATE ADVANTAGE

- Durability
- Scratch & Dent Resistance
- Easy to Disinfect

Comfort PLUS™ Vinyl Colors — *ComfortPLUS Vinyls have softer feel for enhanced patient comfort in general practice use.*



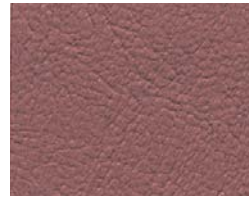
706 Slate Blue



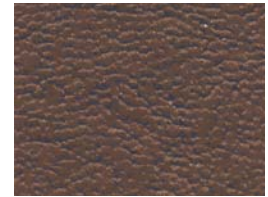
709 Gray



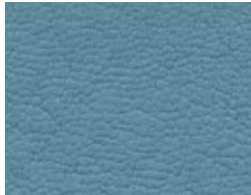
711 Grotto Green



703 Rose



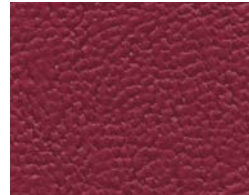
701 Oak Brown



704 Nordic Blue



707 Black



700 Burgundy



702 Rodeo Tan

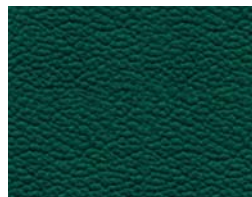
Pro-FORM™ Vinyl Colors — *Pro-FORM Vinyls offer firmer feel for high-volume therapy and sports practices.*



718 Navy Blue



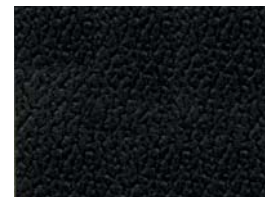
722 Dove Gray



723 Forest Green



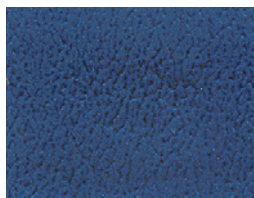
724 Deep Wine



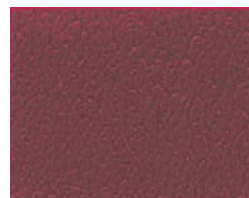
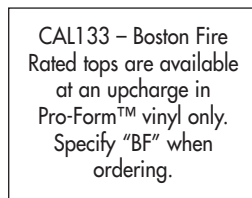
725 Black



731 Regimental Blue



729 Royal Blue



728 Claret



726 American Beauty

Green-Line Urethane Colors — *PVC-free Urethane is Eco-friendly and CAL 01350 compliant for safer indoor air quality.*



752 Indigo Blue



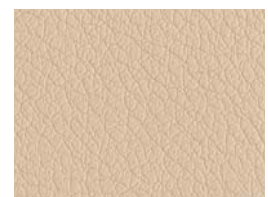
753 Flint Gray



754 Mushroom



755 Port



756 Beige

ABOVE PRINTED COLORS MAY VARY FROM ACTUAL MATERIAL.